

BULK

REAL ESTATE



HOUSE IN ELVIRIA

Elviria

REF# R4442725 – 2.600.000 €

5
Beds

5
Baths

456 m²
Built

1106 m²
Plot

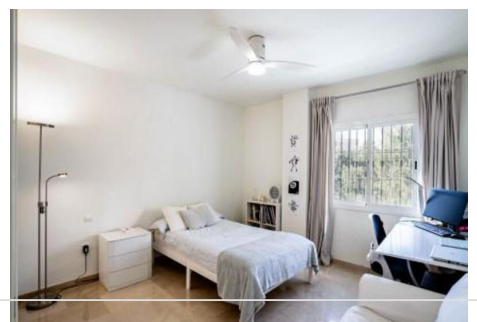
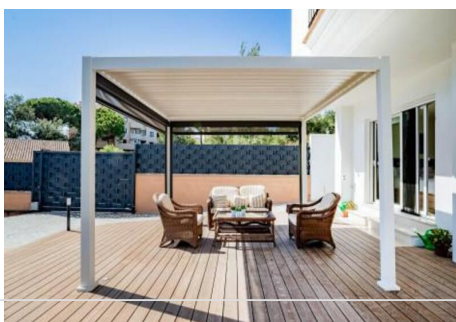
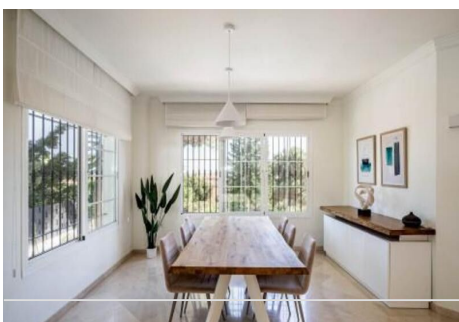
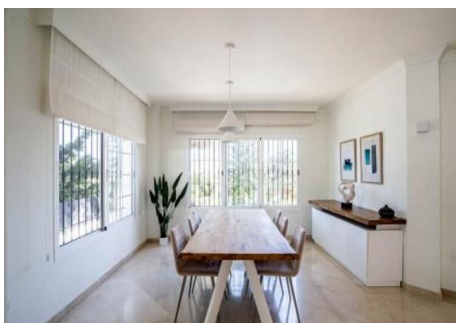
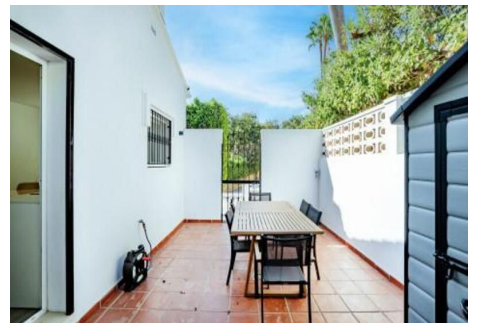
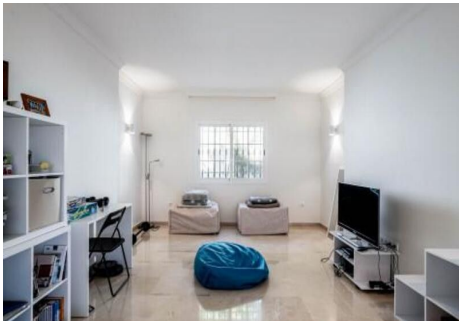
100 m²
Terrace

This elegant ideally located 5 bedroom villa has recently been completely renovated, located in a quiet area of Elviria, surrounded by nature and close to services only 600 meters to the commercial center. The property is spread over 2 floors, on the entrance you will find a fully equipped modern kitchen with a breakfast table and access to the terrace. Open plan living room with fireplace and open dining room which continues to a beautiful terrace with panoramic and partial sea views. There are also 3 bedrooms on this floor with a shared bathroom and guest toilet. Up to garden level, 2 further bedrooms, both with en-suite bathrooms and access to the garden from the terrace. On the other side of the terrace, right next to one of the bedrooms, there is an elegant modern electric pergola that offers more outdoor space that can be used all year round. Above the beautifully manicured garden and large pool area is a gazebo with a full dining and barbeque area. It includes parking for 2 cars in the drive and additional cars on the drive. Located in the Elviria area, walking distance to shops, bars, dining establishments, key amenities, splendid beaches and golf and other leisure activities, it offers all the ingredients of a classic Spanish dream resort. Just a short drive to some of Marbella's most stunning beaches. The town of Marbella is approximately 10 minutes by car and motorway in both directions. Surrounded by the peaceful greenery, this contemporary home offers families expansive bright and open spaces, plenty of entertainment features and multiple exterior lounging

BULK

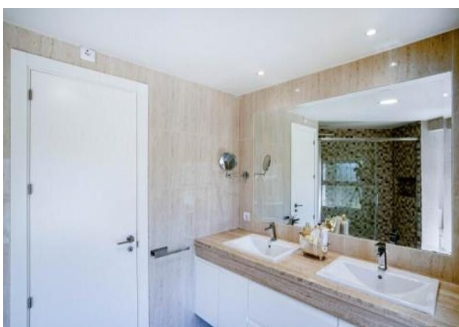
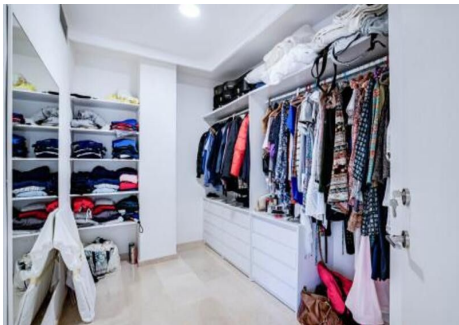
REAL ESTATE

areas to enjoy Marbella's Mediterranean lifestyle. Lastly, the villa has a touristic license to rent it out.



BULK

REAL ESTATE



BULK

REAL ESTATE

