

BULK

REAL ESTATE



HOUSE IN LAS CHAPAS

Las Chapas

REF# R4629559 – 2.695.000 €

4
Beds

4
Baths

536 m²
Built

2550 m²
Plot

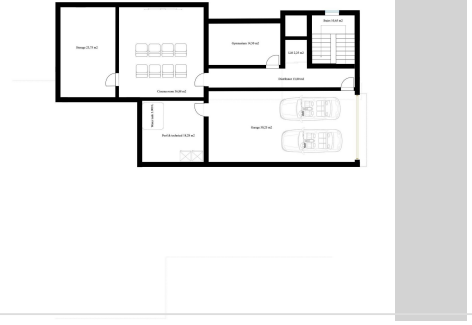
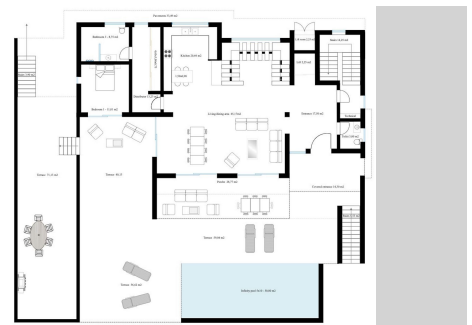
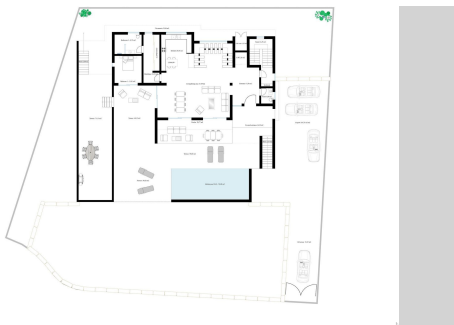
594 m²
Terrace

OFF-PLAN – ECOLOGICAL LUXURY CONTEMPORARY VILLA - KEY-IN-HAND PROJECT – LAS CHAPAS – MARBELLA and consisting of out 3/ bedrooms with 3/4 ensuite bathrooms and 1 guest toilet. Ground floor: covered entrance, entrance, guest toilet, staircase and lift to the basement/garage, elevator room, living/dining area, staircase to the 1st floor, big open plan kitchen, distributor with build-in wardrobe, and a double bedroom with ensuite bathroom. There are plenty of covered terraces, terraces, and sitting areas with a heated infinity pool. First floor: the elevator or staircase brings you to the first floor with the distributor, a double bedroom with the distributor, and a build-in wardrobe and ensuite bathroom. On the other side of the villa, you have the master bedroom with a dressing and master bedroom. Both bedrooms have access to a private terrace. Square meters on the floor plans are useful square meters. If you need a fourth bedroom with a bathroom this would be easy to create in the basement with an English patio to get natural light without any extra cost to the client! Basement/garage: garage, distributor, elevator, gymnasium, technical room, cinema room and storage room. Clients can still adapt the outside and floor plans of the villa according to their preferences. Some of the specifications: - High quality windows with glass of 5+5/16/6+6 - Fully fitted kitchen with aluminum frame doors and covered with COVERLAM - White goods from BOSCH - Aerothermie/airconditioning - Underfloor heating - Bathrooms from ROCA – GEBERIT – VILLEROY BOCH

BULK

REAL ESTATE

or similar - Bathroom walls fitted out with COVERLAN wall plates of 1200x2700 - Interior and exterior floor with high quality tiles from GRESPANIA 600X600 -800X800 – 1200X1200 - Exterior wall cladding from COVERLAM - Elevator from Schindler - 20 voltaic panels - 2 batteries of 10kW each - Car charger Included are plot, project, licenses, first occupation licenses and full construction. Pictures of kitchen and bathrooms are just examples of how it could be! Final choice will be that from the client! We are a construction company, Key-in-Hand, that can design and construct any possibility you can think of. If you do not see a design of us that you like we design a totally new villa for you according to your ideas and input. Although we prefer to construct ecological building, we can construct from traditional construction to ecological constructions it all depends on you.



BULK

REAL ESTATE

