

BULK

REAL ESTATE



GROUND FLOOR APARTMENT IN THE GOLDEN MILE

The Golden Mile

REF# R4687555 – 2.250.000 €

1
Beds

1
Baths

65 m²
Built

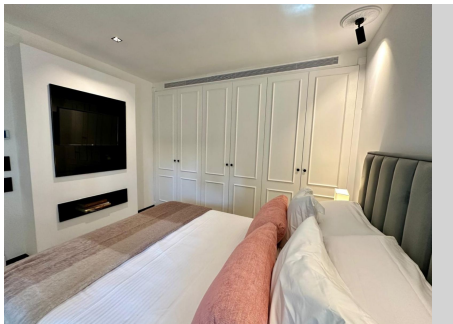
15 m²
Terrace

This fully reburbished 1 bedroom luxurious elevated ground floor apartment is located in a prime location within the Hotel Puente Romano and Nobu Hotel complex, this property offers the epitome of luxury living. Within the prestigious Marina Puente Romano complex, situated in the sought-after Marbella Golden Mile area. This property is spacious with a built area of 65m² and a private west facing terrace of 15m², perfect for enjoying the Mediterranean climate overlooking the hotels tropical gardens, creating a tranquil oasis for residents. Inside the apartment, you will find an open plan living area, with a fully fitted modern kitchen, complete with dining area. The living area is bright and spacious, with elegant finishes including crown moulding ceilings, a marble fireplace and wooden floors, and continues onto the private terrace. Through a stunning black and white marble bathroom with free standing rolletoop bath tub to the bedroom area. A stylish bedroom, with built-in TV area and fitted wardrobes. The property also benefits from air conditioning and underfloor heating throughout, ensuring comfort all year round. Security is a top priority in this complex, with a security entrance, double glazing, and a 24-hour security service. The Marina Puente Romano complex offers a range of amenities, including a tennis/paddle court, heated pool, and 24-hour hotel service from both hotels. The beachside location allows for easy access to the stunning beaches of Marbellas famous Golden Mile, while also being close to golf courses, shops, and schools. This recently renovated

BULK

REAL ESTATE

and refurbished apartment is the perfect choice for those seeking a luxurious and comfortable lifestyle in one of Marbella's most prestigious and iconic locations. Don't miss out on the opportunity to own a piece of paradise in Marina Puente Romano!



BULK

REAL ESTATE

