



## RESIDENTIAL PLOT IN BENAHAVÍS

Benahavís

**REF# R5253751 – 299.000 €**

Beds	Baths	m <sup>2</sup> Built	2870 m <sup>2</sup> Plot
------	-------	-------------------------	-----------------------------

In the heart of one of Benahavís' most exclusive natural enclaves, Plot A16 in Monte Mayor offers an exceptional opportunity to create a fully bespoke villa in a setting where privacy, tranquillity and scenery take centre stage.

Its privileged position enjoys open views over the valley, the mountains and a beautiful lake, framed by Mediterranean woodland that delivers a true sense of retreat without sacrificing everyday convenience.

With a total plot size of 2,870 m<sup>2</sup> and a maximum buildability of 366 m<sup>2</sup>, this is the perfect blank canvas to design a home integrated into nature, with generous terraces, gardens and outdoor spaces created to enjoy the southern climate all year round.

Monte Mayor is a gated community with 24-hour security and a highly regarded residential concept, with only a limited number of homes set on large plots, resulting in greater privacy, peace and a refined aesthetic without any feeling of overcrowding.

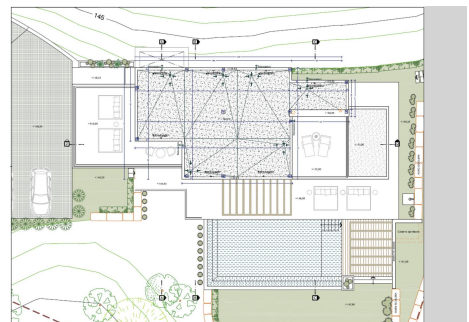
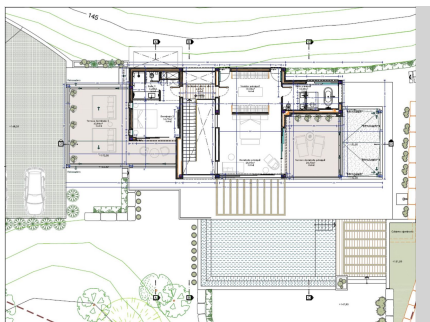
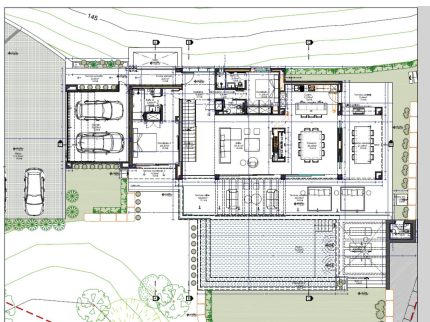
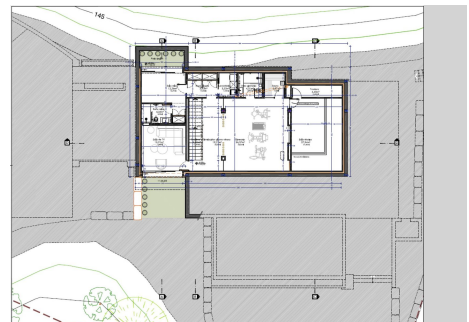
# BULK

REAL ESTATE

Just a short drive from Benahavís, Marbella and the coast, this plot is ideal for those seeking nature, exclusivity and the freedom to create a truly unique property.

Don't miss the opportunity to turn this vision into your reality. Welcome to your future home in Montemayor!

The abbreviated information document is available to you. Expenses: Taxes (ITP or VAT+AJD) + Notarial and registration expenses. ALA



# BULK

REAL ESTATE

