



PENTHOUSE DUPLEX IN BENALMADENA COSTA

Benalmadena Costa

REF# R5364145 – 529.000 €

3
Beds

2
Baths

95 m²
Built

19 m²
Terrace

Welcome to this attractive penthouse in Benalmádena Costa, ideally located just 500 meters from the beach and approximately 2 km from Puerto Marina. The property is situated directly opposite the famous Parque de la Paloma and within walking distance to restaurants, cafés, shops, and all amenities, while still offering a peaceful living environment year-round.

The apartment is distributed over two levels with a bright and well-designed layout. On the entrance level, you are welcomed by an open-plan kitchen and living area, creating a social and inviting space. This floor also features a southwest-facing balcony, ideal for enjoying the afternoon and evening sun, along with two bedrooms and one bathroom.

Upstairs, you will find a spacious master bedroom with an en-suite bathroom. Part of the room is currently used as storage but can easily be converted into an additional bedroom, office, or guest room. This level also offers a large southwest-facing terrace, perfect for relaxing, sunbathing, or outdoor dining.

BULK

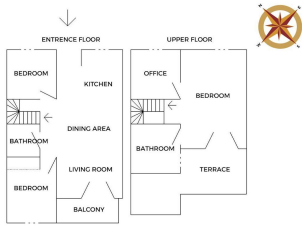
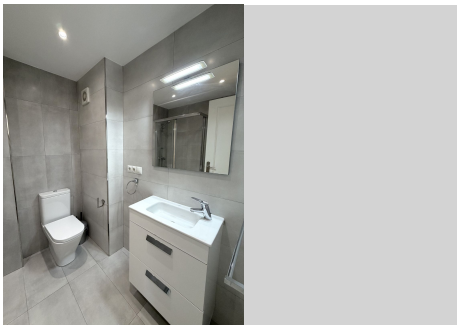
REAL ESTATE

Both levels enjoy beautiful views of the sea, mountains, and city. With a tourist license already in place and currently used for rentals, this property is an excellent investment opportunity as well as a perfect holiday home or permanent residence.



BULK

REAL ESTATE



Measurements were taken on site with a CLM 50 ZT CC PROFESSIONAL. Adjustments were made during drafting and not based on final measurements.

